



**Project, [www.wide.ad.jp](http://www.wide.ad.jp)**



✧ **WIDE ; Widely Integrated Distributed Environment**

✧ **Since 1988**

✧ **Develop, deliver and deploy the Internet with global partners**

✧ **Cooperation with industries and government agencies**

✧ **WIDE Internet, design, built and operated by ourself**

✧ **Camp network (ad hoc network) in March and September**

✧ **Interop Tokyo Shownet (ad hoc network) STM in June**

◆ **Domestic networks, including Lab. and EEICE networks** 日本

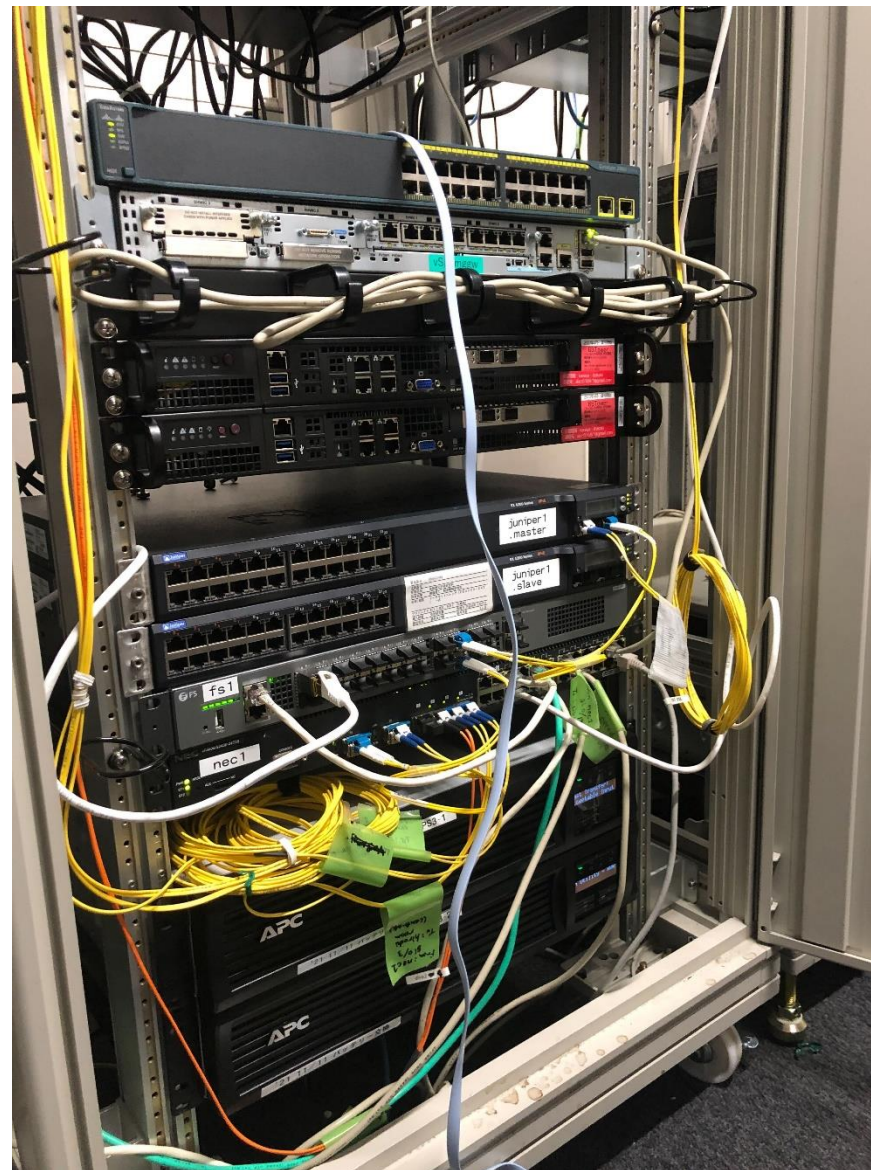
◆ **Global networks** 地球

◆ **Quantum networks** 地球

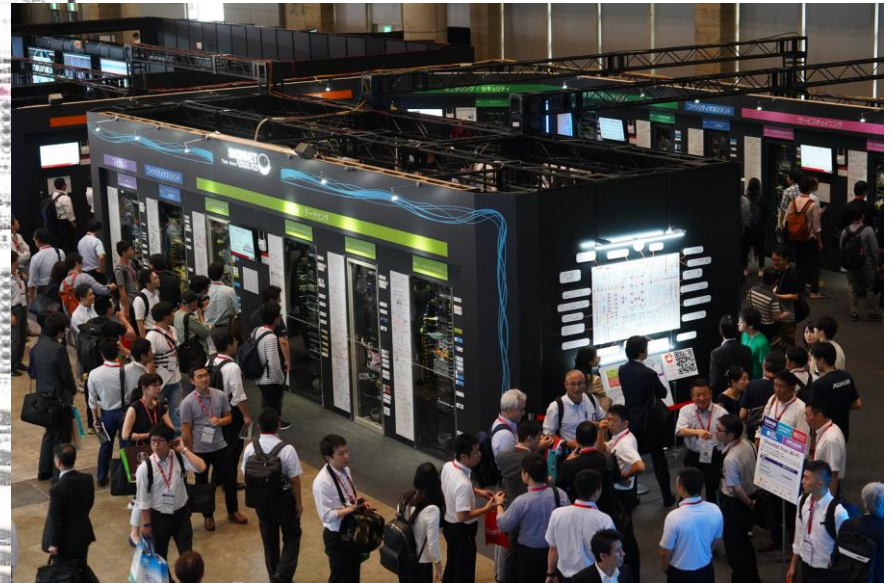
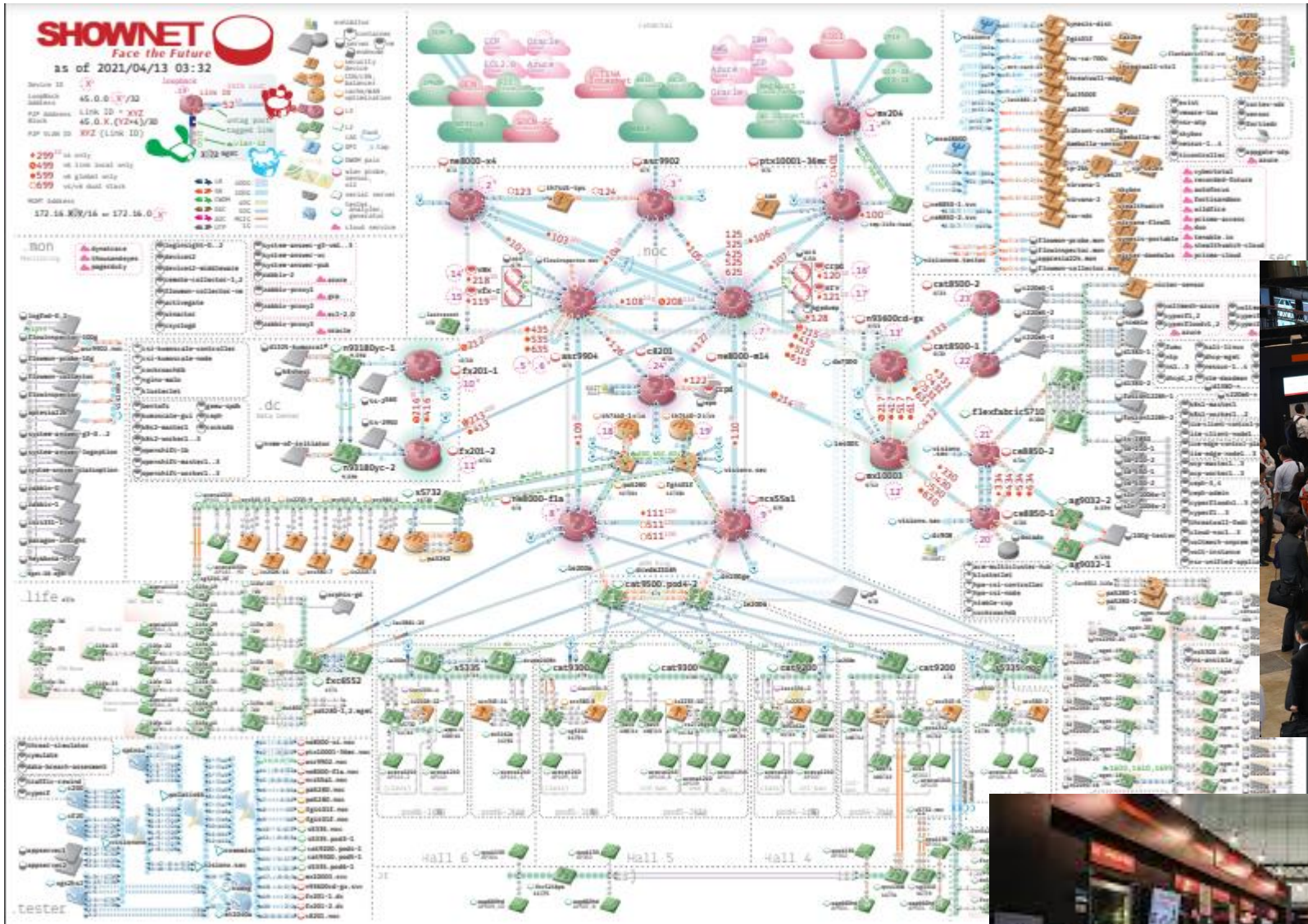
◆ **NTN(Non Terrestrial Networks) 宇宙** **\*\*New\*\***

◆ **Data Center Networks for AI and Web**

- サーバルームの整備
- 実験装置の管理・運用









<https://www.arena-pac.net/ja/>



Operated by **WIDE**





✧ **GUTP ; Green University of Tokyo Project**

✧ **Since 2008**

✧ **Open smart building/campus with Internet-by-Design**

✧ **Green as a gift, but Open Digital Twin is our target**

✧ **GUTP Research Members in 2023;**

➤ **31 companies, 12 NPOs**

✧ **Active Working Groups; 6**

✧ **{Edge-driven} AI/ML**

✧ **Cyber Security for OT**

✧ **BIM Platform {integration with iCAR/SDM in WIDE}**

✧ **SDGs**

✧ **Smart infrastructure**

✧ **Strategic Actions**

**Cooperative university testbeds**

✧ **WEF, IEEE, Microsoft, IPA/DADC(@jp), etc.,**

# The University of Tokyo in Summer of **2011**

## **Hacking building/campus facilities with IP**

	Peak (2010)	Peak (2011)	Total (2011)	RoI
Major 5 campuses	<b>66 MW</b>	69% ( <b>△31%</b> )	75%-78% ( <b>22%-25%</b> )	less than <b>1 month</b>
Eng. No2 Bldg.	1 MW	56% ( <b>△44%</b> )	69% ( <b>△31%</b> )	<b>2 years</b>

### **[Contributions]**

- 1. Multi-Vender for sustainability by TCP/IP**
- 2. Global open standard for interoperability**

▶ Skip to content

✉ Contact



東京大学  
THE UNIVERSITY OF TOKYO



🌐 Language



Giving to UTokyo

Search

People

◀ HOME

UTokyo **FOCUS**

Features

Articles

Events

Press releases

Jobs

Find stories

# ARTICLES

▶ Japanese



Enter terms

Search

The University of Tokyo Signs Strategic Memorandum of Understanding with Microsoft to promote Green Transformation (GX), Diversity and Inclusion (D&I) and AI Research





# Where recent students go, mainly ?

## 1. Established IT/ICT companies

- a. Internet Service Provider (e.g., NTT, KDDI, SoftBank, Rakuten)
- b. Cloud/Application/Contents Service Provider (e.g., AWS, Yahoo!, DeNA)

## 2. Start up companies

- a. Starting up by themselves
  - i. DINII <https://www.dinii.jp/>
  - ii. Hirasol Energy <https://www.pplc.co/>
  - iii. OpenEight <https://www.wantedly.com/id/hisatake>
- b. Join to established start up companies
  - i. Preferred Networks
  - ii. Indeed

